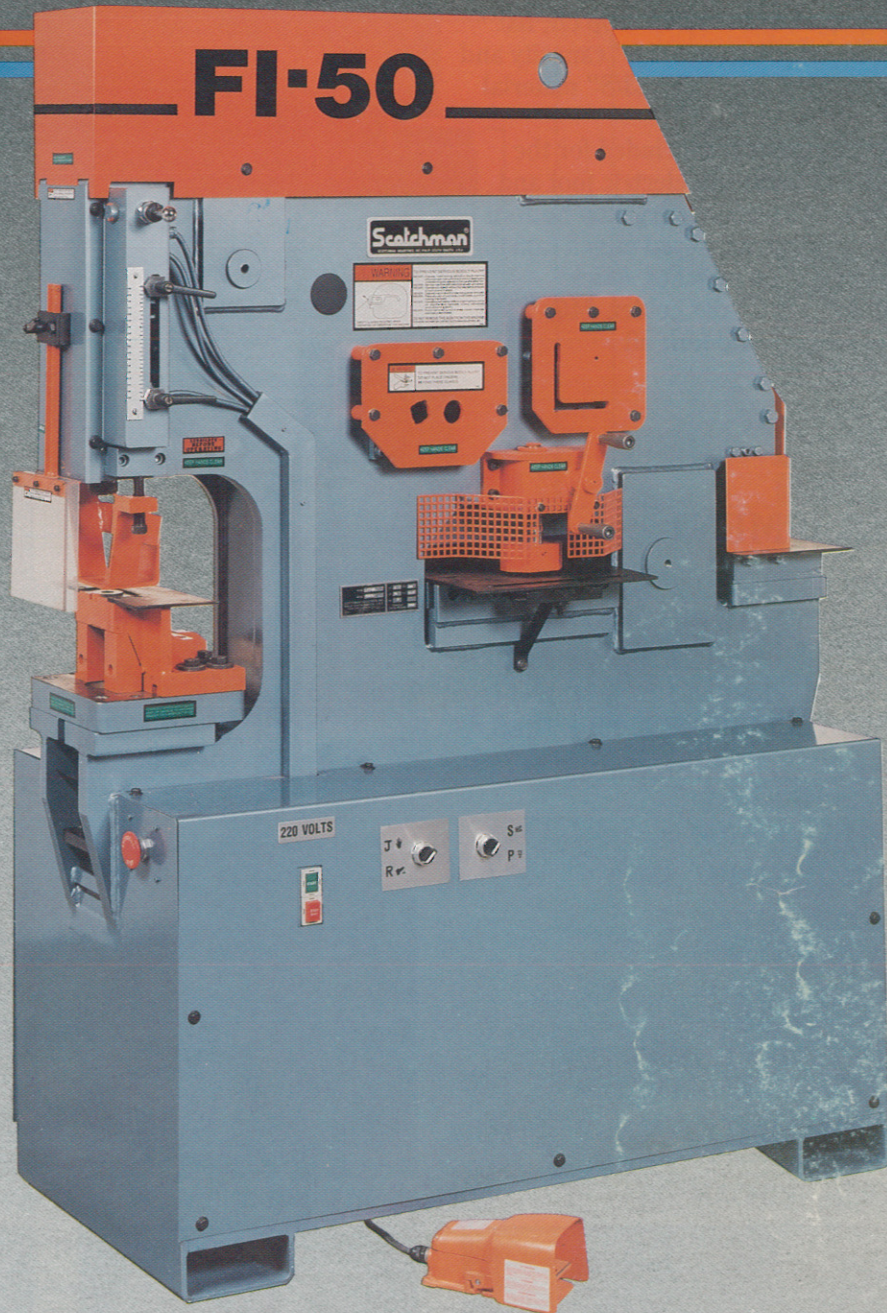


Scotchman®



Fully Integrated Hydraulic Iron Worker
Model FI 5009-14M

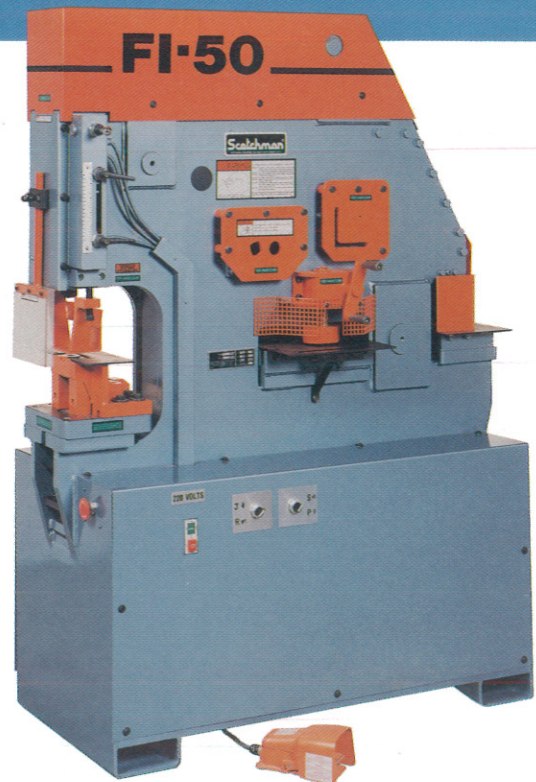
FEATURES and OPTIONS

STANDARD EQUIPMENT

This machine was designed for the end user that does not want to make tooling changes. With five fixed tooling stations, set up time is cut to a minimum.

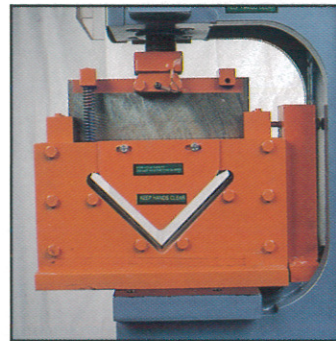
The five standard functions on this machine consist of a 50-ton punching station with a 9" throat and 3-7/8" stroke, Rod shear for up to 1-3/8" round and 1-1/4" square, Angle shearing up to 4"x4"x3/8" crop off, flat bar shear with 14" blade length up to 1"x8" capacity and a rectangle notcher capable of 2-1/2"x5" x3/8" material thickness.

Other standard features that are included for the operator's convenience and safety are electric foot and stroke controls, jog switch, two emergency stop buttons located at each end of the machine, keyed punch ram for easy alignment of special shaped punches, quick adjustable swing away stripper, 2" die holder, #40 Retaining nut, two-stage pump, and fork lift accommodations.

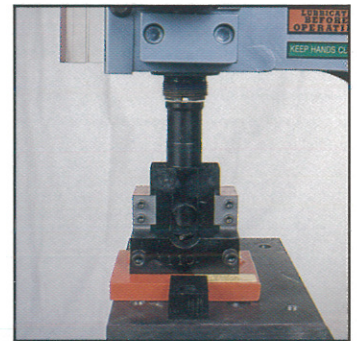


OPTIONAL EQUIPMENT

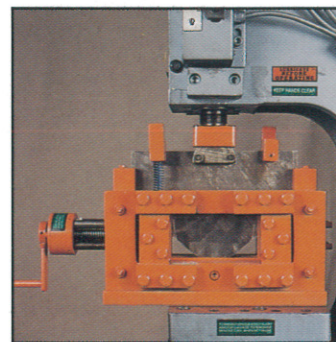
- (A) ANGLE SHEAR UP TO 6"x6"x1/2" SLUG TYPE
(NOT PICTURED: OPTIONAL BLADES FOR UNEQUAL LEG ANGLE IRON)
- (B) PIPE NOTCHER 3/4", 1", 1-1/4", 1-1/2" AND 2" I.D.
UPPER AND LOWER SCHEDULE 40 PIPE DIES
- (C) CHANNEL SHEAR 2" TO 6" ADJUSTABLE SLUG TYPE
- (D) OFF SET DIE HOLDER
- (E) 6 FOOT BACK GAUGE
- (F) 12" BRAKE
- (G) 2-1/2" DIE HOLDER
- (H) NOT PICTURED 3" DIE HOLDER
- (I) NOT PICTURED: 6"x6" DIE HOLDER FOR PUNCHING HOLES OVER 3" DIAMETER
- (J) NOT PICTURED HEAVY DUTY JAM NUT



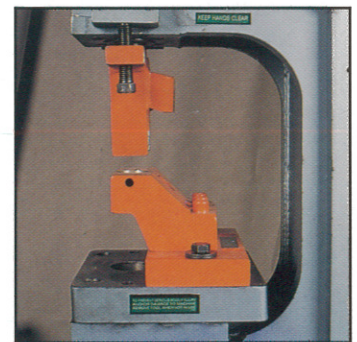
(A) ANGLE SHEAR



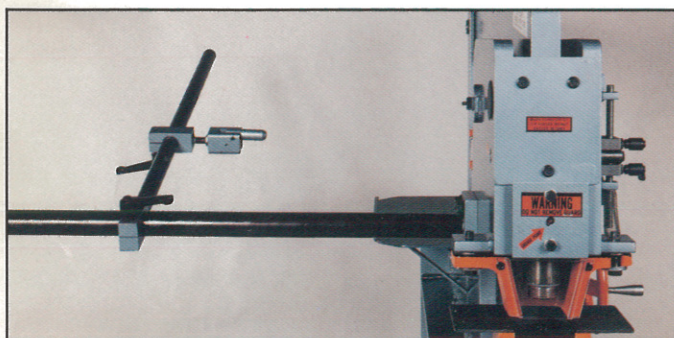
(B) PIPE NOTCHER



(C) CHANNEL SHEAR



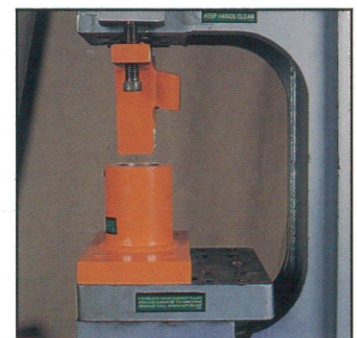
(D) OFF SET DIE HOLDER



(E) 6 FOOT BACK GAUGE

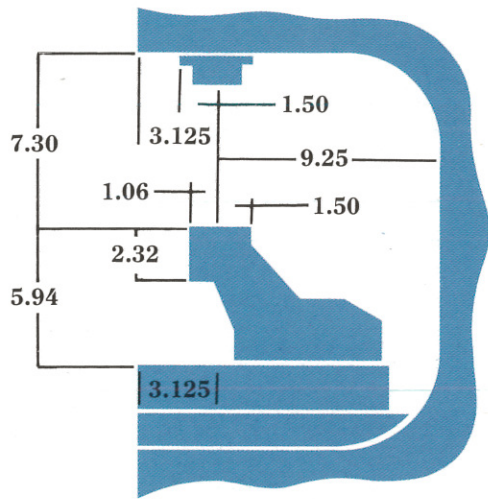
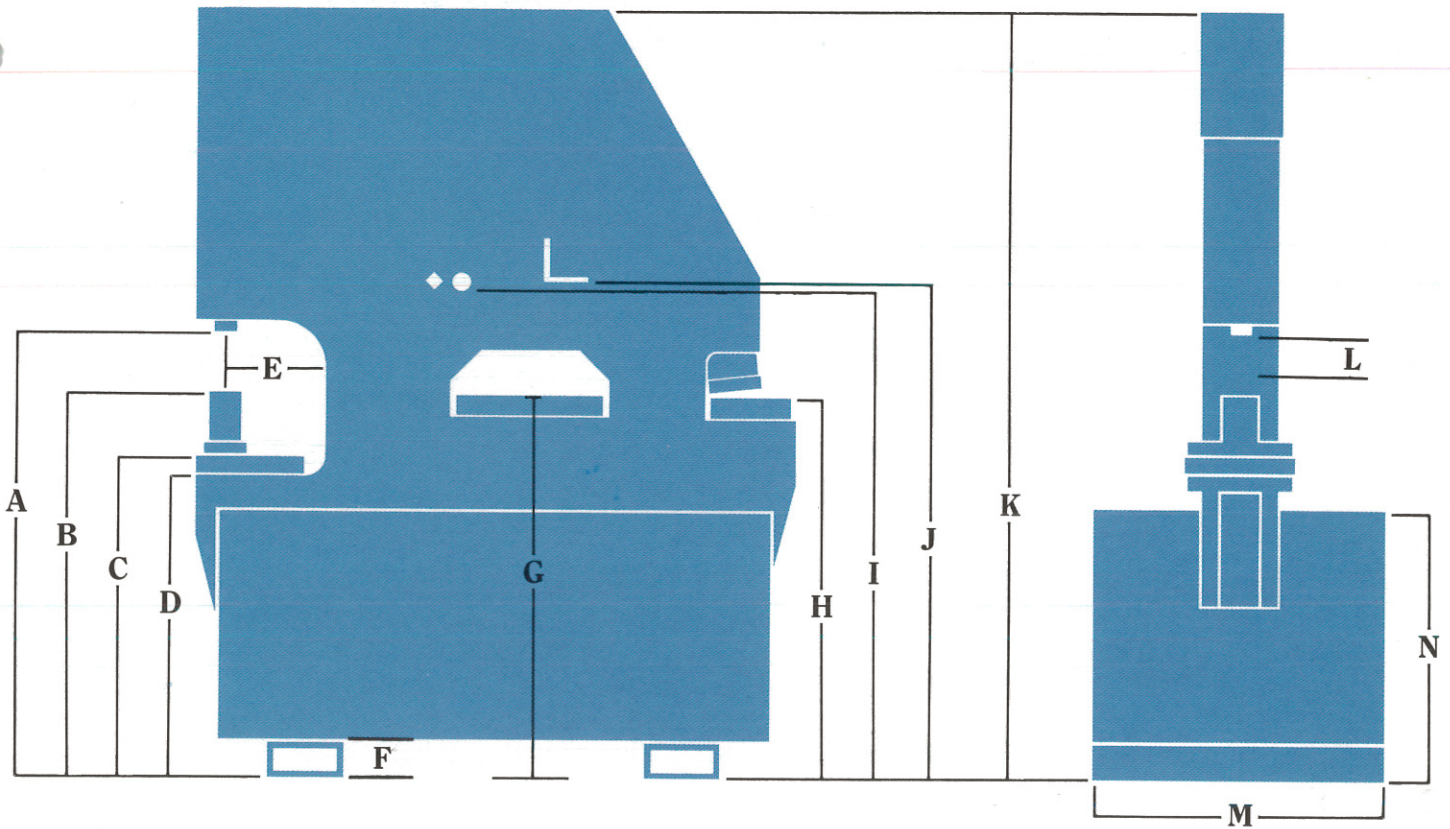


(F) 12" BRAKE

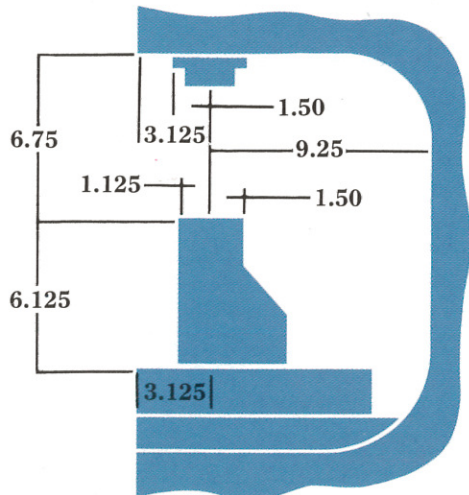


(G) 2-1/2" DIE HOLDER

SPECIFICATIONS



**OPTIONAL
OFF SET DIE
HOLDER**



**STANDARD 2"
DIE HOLDER**

- (A) FLOOR TO PUNCH RAM 41-1/4"
- (B) FLOOR TO TOP OF DIE 37-1/4"
- (C) FLOOR TO TOP OF BOLSTER 31-1/4"
- (D) FLOOR TO BOTTOM OF BOLSTER 29-1/4"
- (E) THROAT DEPTH 9"
- (F) FLOOR TO BOTTOM OF MACHINE BASE 3-1/2"
- (G) FLOOR TO BAR SHEAR 37-1/8"
- (H) FLOOR TO NOTCHER 37-1/4"
- (I) FLOOR TO ROD SHEAR 47-3/8"
- (J) FLOOR TO ANGLE SHEAR 47-3/8"
- (K) MACHINE HEIGHT 74-1/2"
- (L) STROKE 3-7/8"
- (M) WIDTH 28-1/2"
- (N) FLOOR TO TOP OF SHROUD 25-3/4"
LENGTH 59-1/2"
WEIGHT 3,562
PUNCH RAM 2" - 10"
UNS THREADS



FI 5009-14M and Available Tooling

SPECIFICATIONS—RATED ON MILD STEEL (60,000 PSI TENSILE)

PUNCHING	U.S.	METRIC
THROAT DEPTH	9"	228.5
PUNCH TONNAGE	50 Ton	45 M.T.
PUNCH CAPABILITIES	13/16" in 3/4" 1" in 5/8" (4" in 1/8" spec tool)	18 in 18 25 in 16 (100 in 3.17 spec tool)
PUNCH STYLE	40 and 45	
DIE STYLE	82 and 86	
STROKES PER MINUTE (SPM)		
LIGHT MATERIAL	35	
MAX CAPACITY	14	
ANGLE SHEAR	4"x4"x3/8"	100x100x10
MITER ANGLE	4"x4"x3/8"	100x100x10
CHANNEL SHEAR	2" TO 6" ADJUSTABLE	50 TO 150 ADJUSTABLE
ROD SHEAR		
ROUNDS	1-3/8"	35 MM RD
SQUARES	1-1/4"	30 MM SQ
FLAT BAR SHEAR	1"x8" 3/4"x10" 5/8"x12" 1/2"x13-1/2" 3/8"x14" 1/4"x14"	200x25 250x18 300x16 300x13 350x10 350x6
V NOTCHER	2-1/2"x2-1/2"x3/8"	63.5x63.5x10
RECTANGLE NOTCHER	2-1/2"x5"x3/8"	63.5x127x10
PIPE NOTCHER	3/4", 1", 1-1/4"	20 25 32
Schedule 40 I.D.	1-1/2" 2"	38 50
BRAKES	50 ton	45 M.T.
12" Brakes with 2" Std. dies	1/4"	6
12" Brakes with 3" optional dies	3/8"	10
12" Brakes with 4" optional dies	1/2"	12
HYDRAULICS (2 stage pump)	2500 PSI	17240 KPA
MOTORS	5 HP-3 PH	3.73KW
STANDARD 230/460		
OPTIONAL 200/208		
340/380 400/415 460/475		
OPTIONAL	5 HP-1 PH	N/A
DIMENSIONS	W 28-1/2" L 59-1/2" H 74-1/2"	.723 M 1.511 M 1.889 M
WEIGHT (Net)	3700 LBS	1678

SCOTCHMAN INDUSTRIES INC.
 180 EAST HIGHWAY 14
 P.O. Box 850
 Philip, South Dakota 57567-0850 U.S.A.
 Phone (605) 859-2542
 FAX (605) 859-2499

YOUR DEALER IS: